

Sprint Weekend April 2020 - Stage 4 Analysis

Blue route = fastest.

Red = other possible routes

Sometimes other slight variations to the blue route have been allowed in scoring. But for clarity they aren't shown below. You can see exact routes allowed on your route analysis here <https://rapidroutegame.web.app/lockdown/view-routes> (must go through blue dots and not through any red)

If you want to ask a specific question about one of your routes please take a screenshot of it and email it to us lockdownorienteering@gmail.com and put your competitor number in the Subject and in the email.

Number of people Getting it Correct out of 464

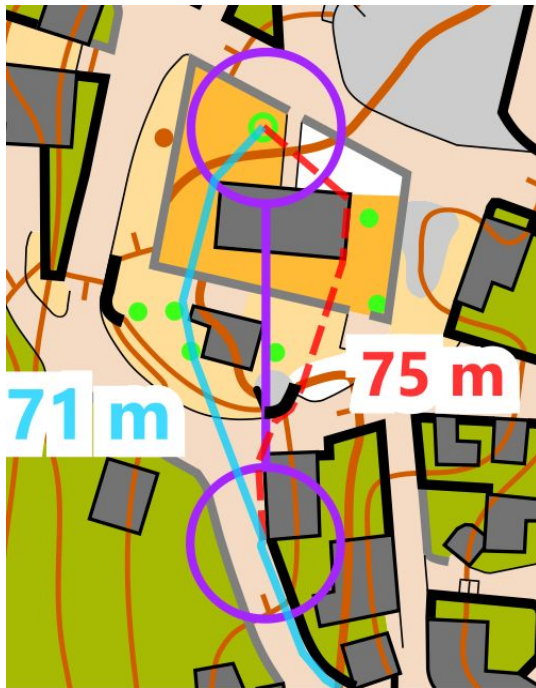
1 - 394
2 - 341
3 - 301
4 - 208
5 - 295
6 - 243
7 - 92
8 - 72
9 - 217
10 - 52
11 - 91
12 - 11

Number of people who got in in under 30s out of 464

1 - 394
2 - 342
3 - 302
4 - 208
5 - 274
6 - 240
7 - 63
8 - 47
9 - 202
10 - 26
11 - 56
12 - 0

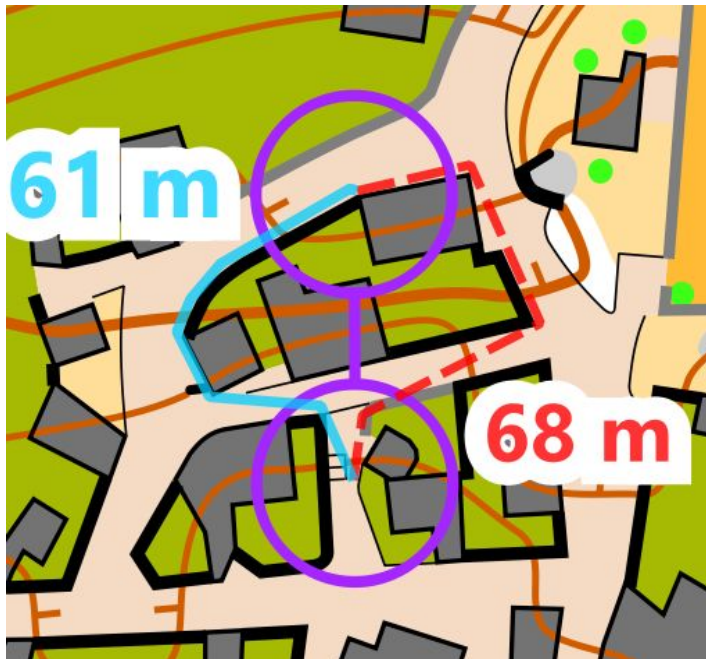
1

Fastest: Both blue and red routes are correct as so almost the same.



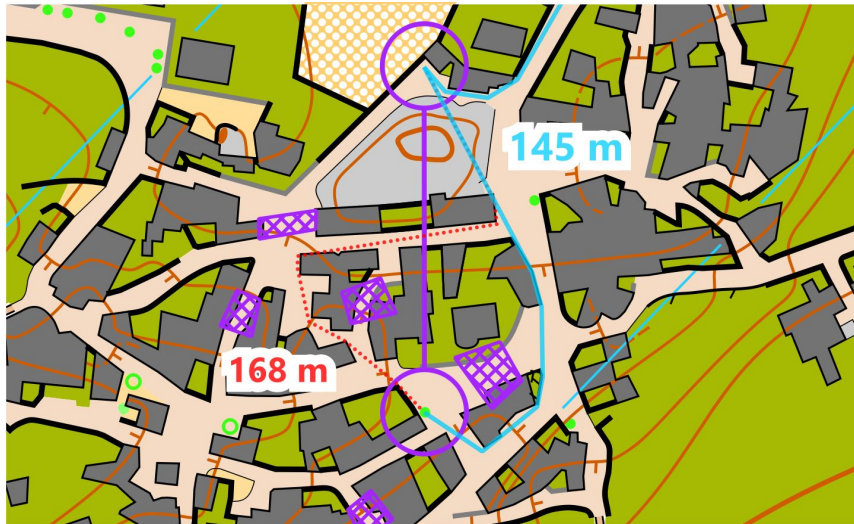
2

Fastest: Blue route only.



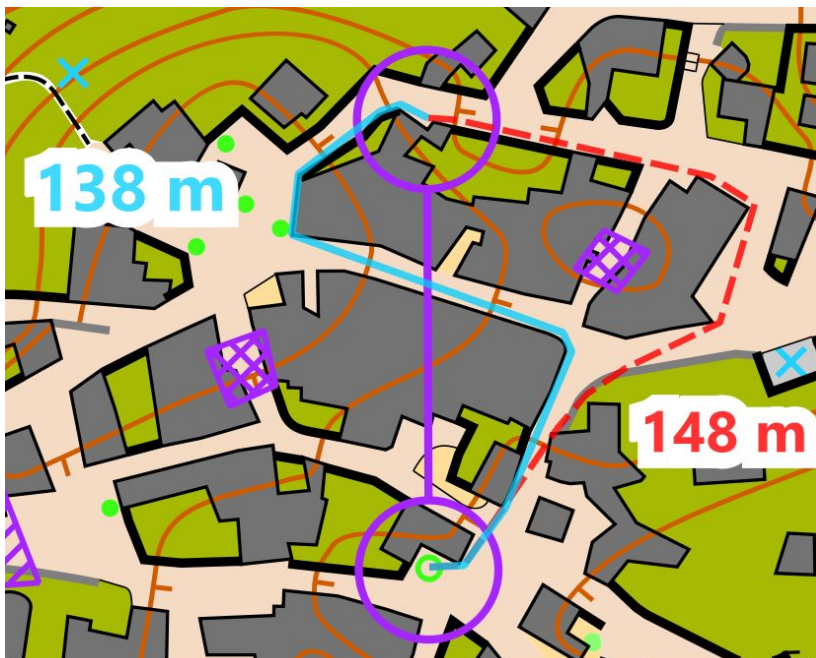
3

Fastest: Blue route only



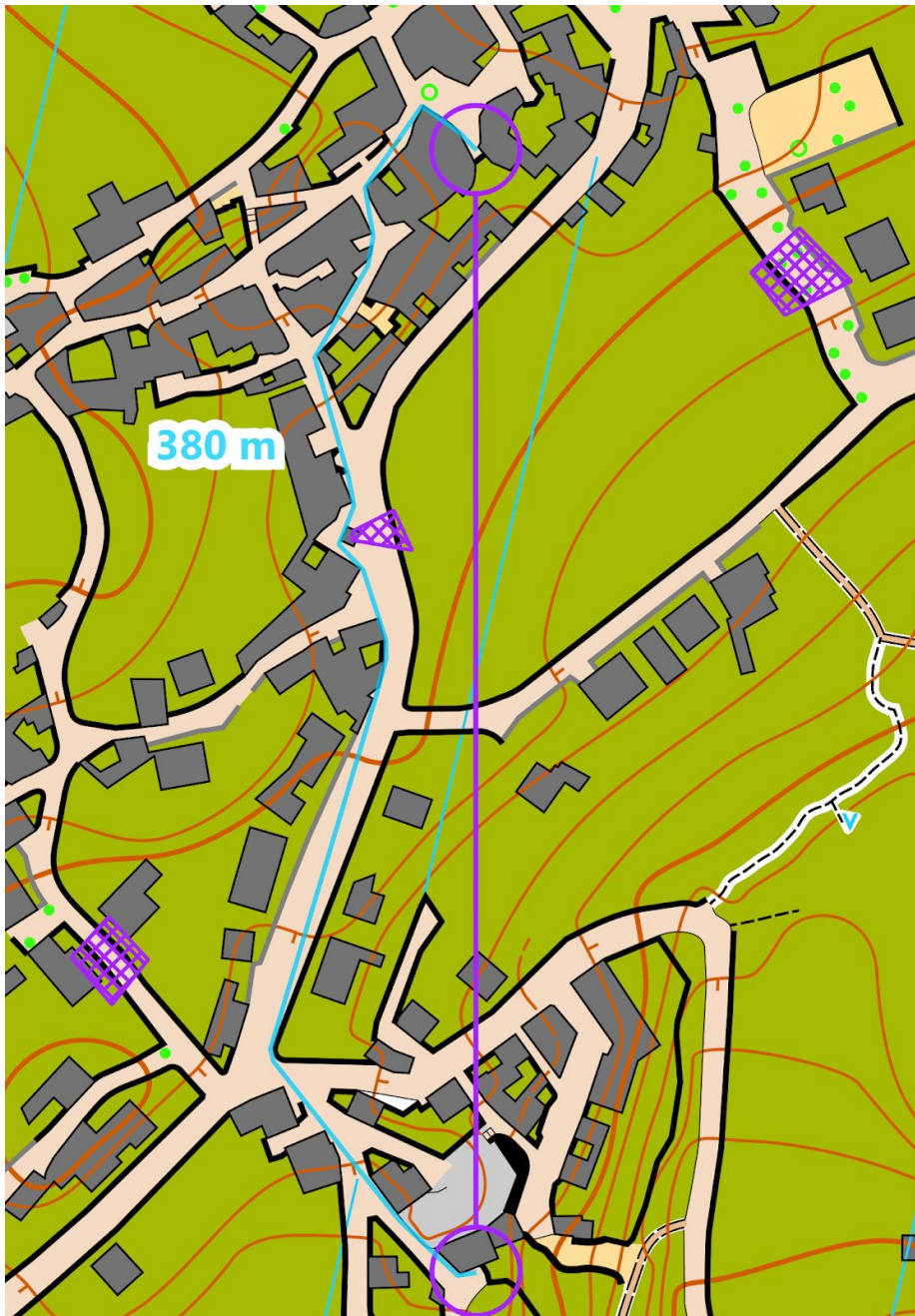
4

Fastest: Blue route only



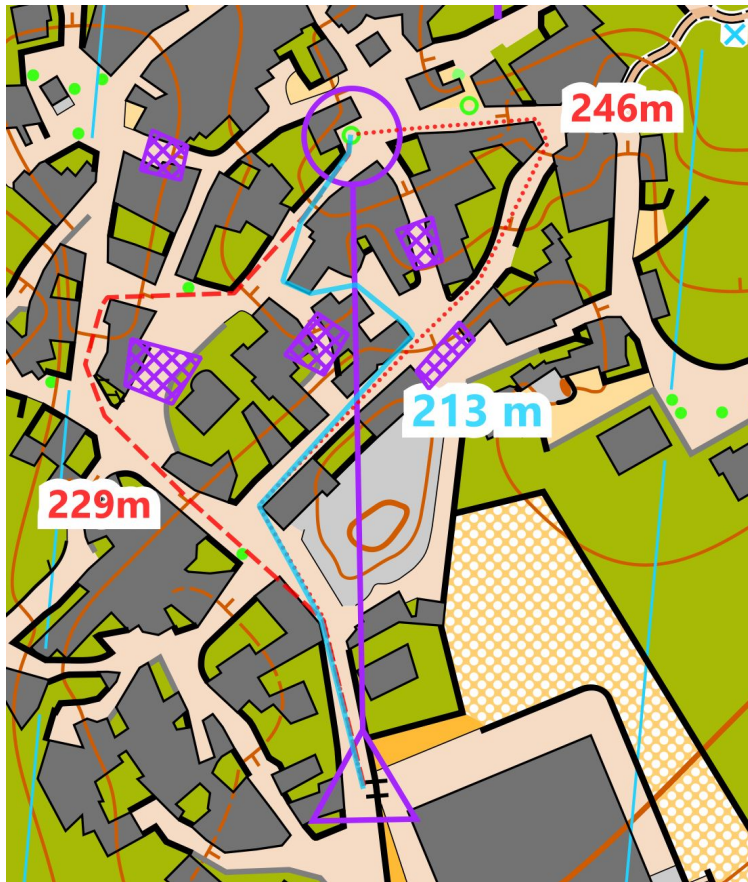
5

Fastest: Blue route only



6

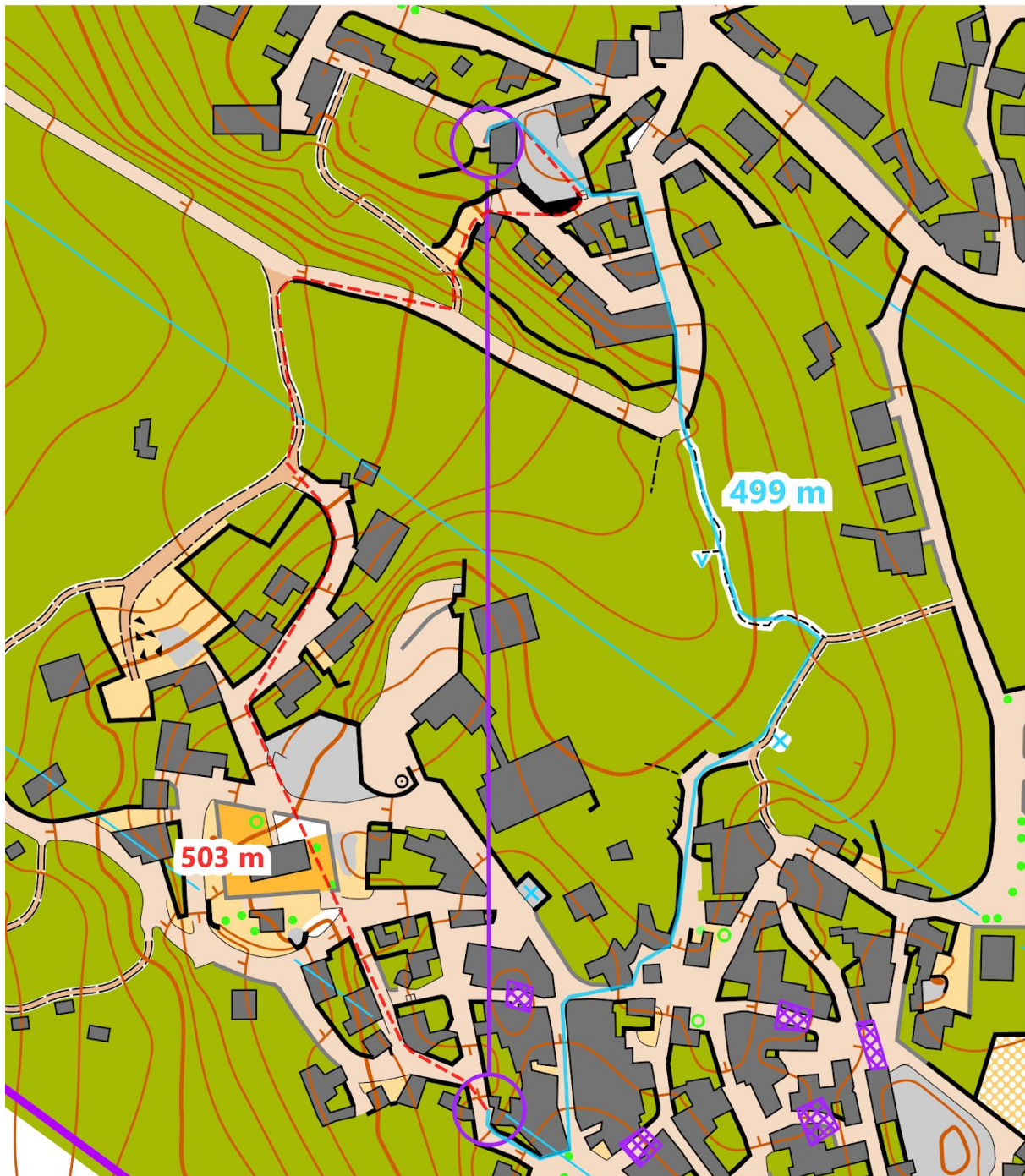
Fastest: Blue route only



7

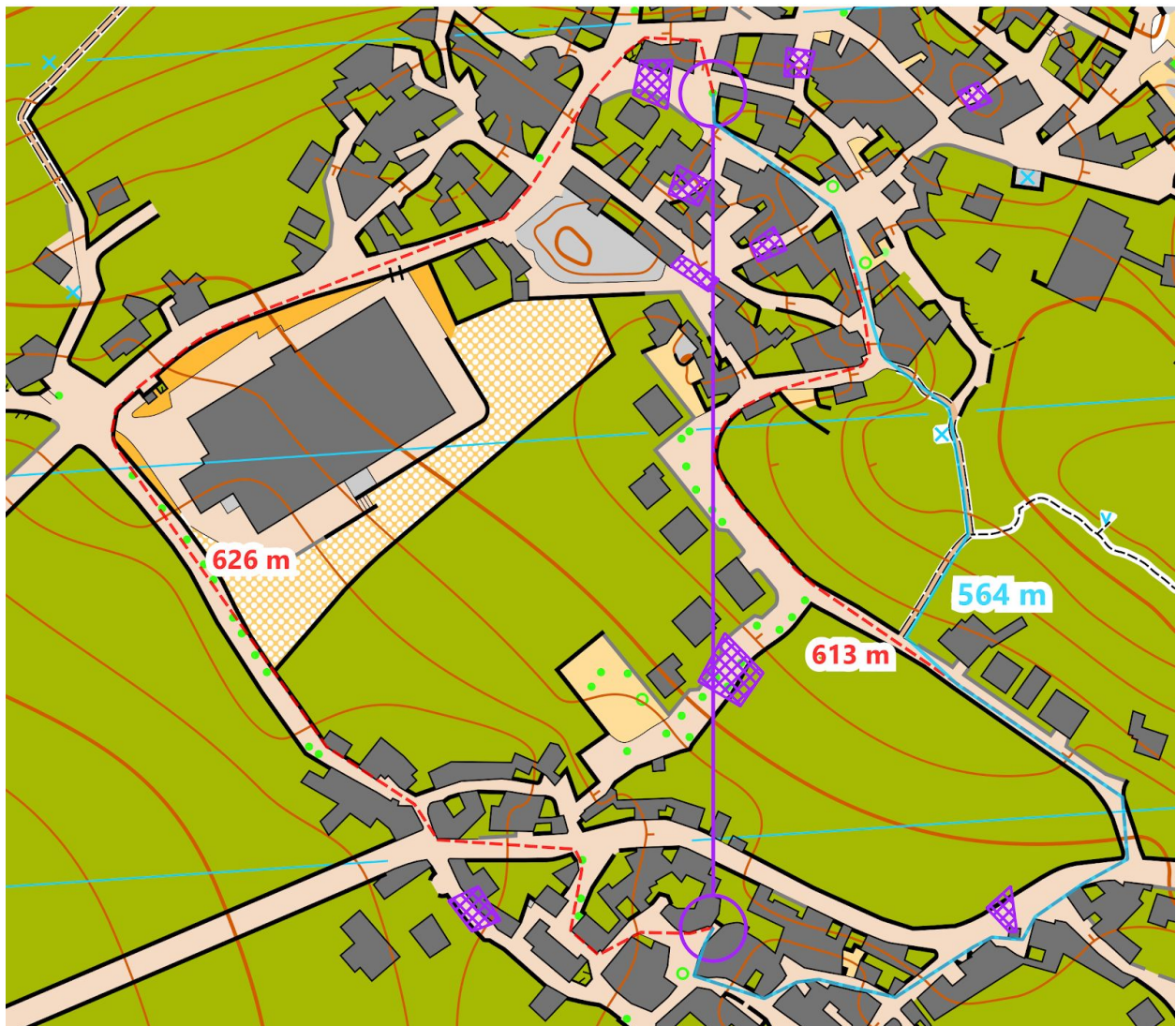
Fastest: Blue route (some small differences to blue also accepted)

Although the 2 main routes are the same distance the red has more climb, the last part very steep!

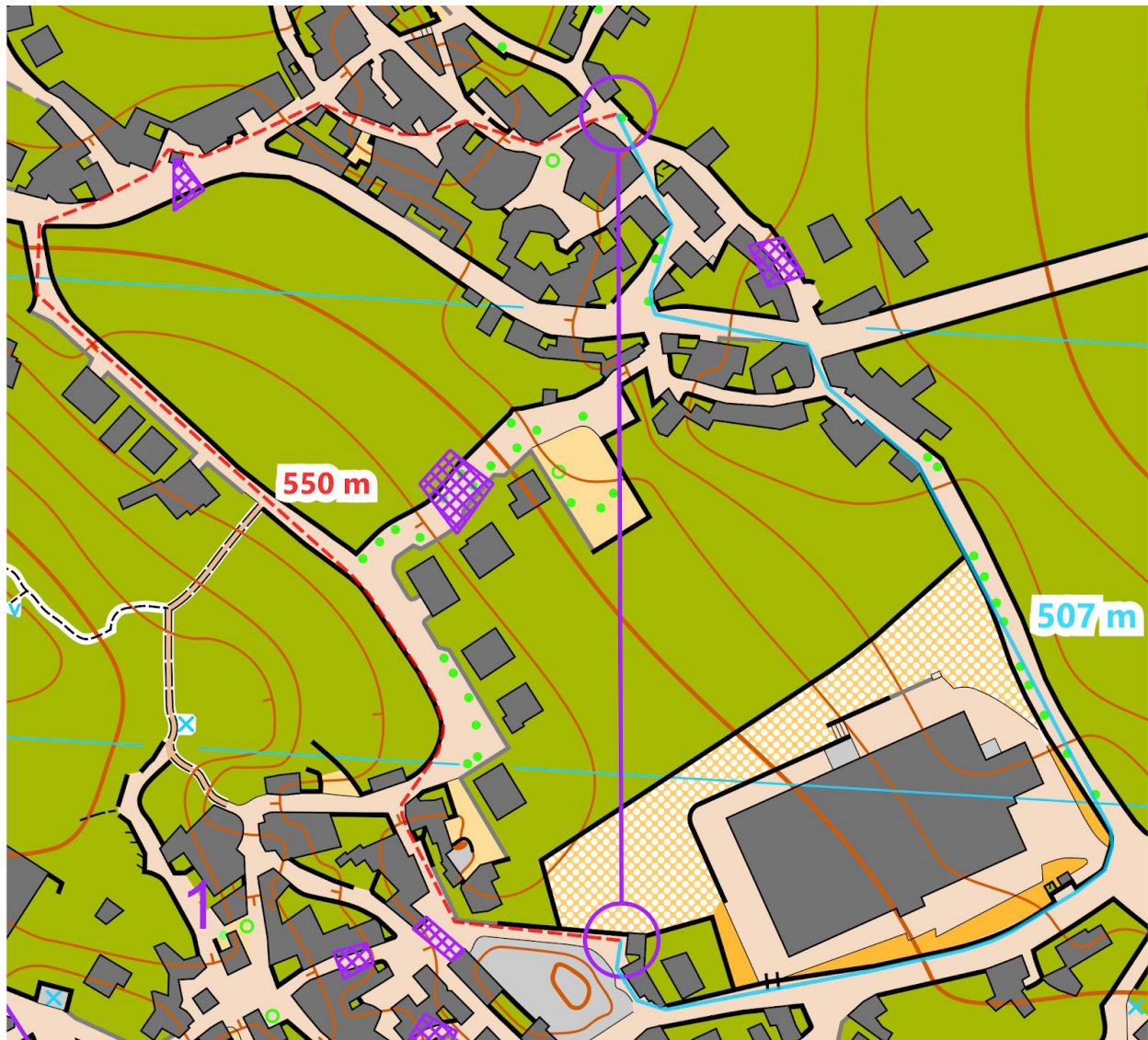


8

Fastest: Blue - We also allowed the route that turned off the blue route at the blue X ((2/3rds through) - although slightly longer it has less climb.



Fastest: Blue route (some small differences to blue also accepted)

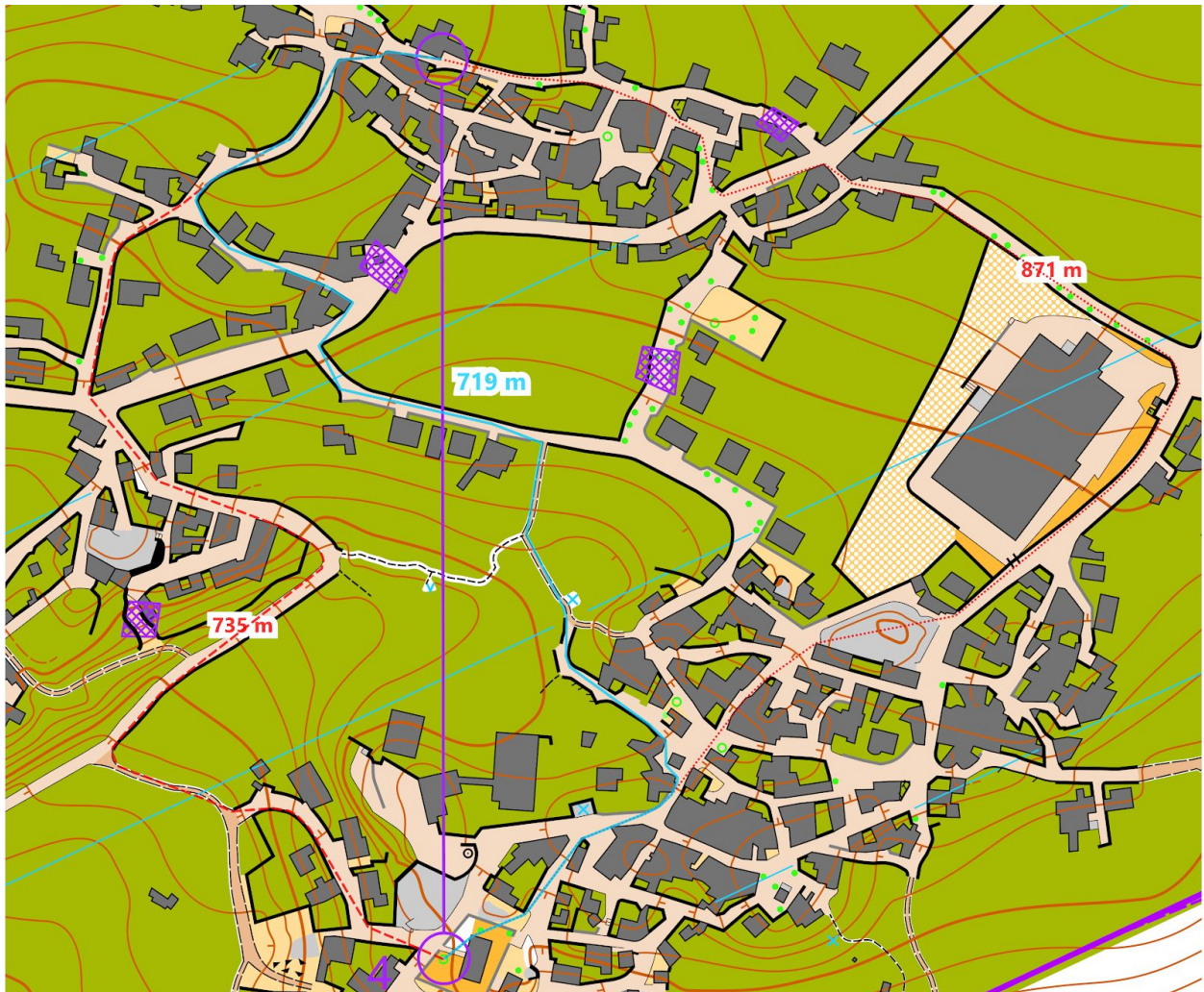


10

Fastest: Blue route (some small differences to blue also accepted)



Fastest: Blue route (some small differences to blue also accepted)



12

Too hard...?

Fastest: Blue route (some small differences to blue also accepted)

